

PARKING & WAITING REVIEW DECEMBER 2016



APPENDIX 1 RECOMMENDATIONS

REF	LOCATION	COMPLAINT	SITE VISIT	COMMENTS	PLAN
1	<u>The Parade</u> , j/w Shore Close, Minnis Bay, Birchington.	Members, TDC and KCC – To change free parking to pay and display to help with the turnover of vehicles.	15/11/16 RCS & LD	Agree. To install pay and display parking bays along the Parade on both side of the road, and install double yellow lines to deal with sight lines, reduce potential vehicular conflict. Charges will be set within fees and charges.	See site plan 1
2	<u>Albion Road</u> , Broadstairs.	Residents, TDC and KCC – are concerned about residents parking.	15/11/16 RCS & LD	Agree. To remove a section of redundant yellow line to increase free parking for residents.	See site plan 2
3	<u>Bradstow Way</u> , j/w Carlton Avenue and Masons Rise, Broadstairs.	Residents, Members TDC and KCC – are concerned about inconsiderate parking.	15/11/16 RCS & LD	Agree. To install double yellow lines both sides of the junction to deal with sight lines, reduce potential vehicular conflict and to deal with inconsiderate parking.	See site plan 3
4	<u>Elmwood Avenue</u> , Broadstairs.	Members, TDC and KCC – To change free parking to pay and display to help with the turnover of vehicles and deal with inconsiderate parking.	15/11/16 RCS & LD	Agree. To install pay and display parking bays on one side of the road to help deal with inconsiderate parking. Charges will be set within fees and charges.	See site plan 4
5	<u>Harbour Street</u> , Broadstairs.	Residents, Members, TDC and KCC – are concerned about inconsiderate parking.	15/11/16 RCS, ID & LD	Agree. To install loading restrictions along both sides of the road to deal with inconsiderate parking, sight lines issues and reduce potential vehicular conflict for large vehicles turning.	See site plan 5
6	<u>Ramsgate Road</u> , Broadstairs.	Resident, Members, TDC and KCC – are concerned about inconsiderate parking.	15/11/16 RCS & LD	Agree. To change single yellow lines to double yellow lines to deal with sight lines, reduce potential vehicular conflict and to deal with inconsiderate parking when lines can be used.	See site plan 6
7	<u>Cliff Terrace</u> , Margate.	Residents, TDC and KCC – are concerned about inconsiderate parking in the middle of the road.	15/11/16 RCS & LD	Agree. To extend the number of parking bays against the kerb and to hatch the area in the road to stop vehicles parking. This will reduce potential vehicular conflict and with inconsiderate parking.	See site plan 7

8	<u>Herbert Place</u> , Mill Lane Margate.	Residents, TDC and KCC - are concerned about inconsiderate parking.	15/11/16 RCS & LD	Agree. To change single yellow lines to double yellow lines to deal with sight lines, reduce potential vehicular conflict and to deal with inconsiderate parking when lines can be used.	See site plan 8
9	<u>Holly Lane</u> , Margate.	Residents, TDC and KCC – are concerned about inconsiderate parking.	15/11/16 RCS & LD	Agree. To install double yellow lines both sides of the junction to deal with sight lines, reduce potential vehicular conflict and to deal with inconsiderate parking.	See site plan 9
10	<u>Rancorn Road</u> , Margate.	Resident – concerned that they are not able to charge an electric vehicle.	15/11/16 RCS & LD	Agree. To install an electric charging bay outside number 47 Rancorn Road with an annual charge as set within fees and charges..	See site plan 10
11	<u>Sparrow Castle</u> , Margate.	Residents, TDC and KCC – are concerned about inconsiderate parking.	15/11/16 RCS & LD	Agree. To change single yellow lines to double yellow lines to deal with sight lines, reduce potential vehicular conflict and to deal with inconsiderate parking when lines can be used.	See site plan 11
12	<u>St Pauls Road</u> , j/w Sweyn Road, Margate.	Residents, TDC and KCC – are concerned about inconsiderate parking.	15/11/16 RCS & LD	Agree. To install double yellow lines both sides of the junction to deal with sight lines, reduce potential vehicular conflict and to deal with inconsiderate parking.	See site plan 12
13	<u>Westbrook Avenue</u> , j/w Rancorn Road, Margate.	Residents, Members, TDC and KCC – are concerned about inconsiderate parking.	15/11/16 RCS & LD	Agree. To install double yellow lines on one side of the bend of the junction to deal with sight lines, reduce potential vehicular conflict and to deal with inconsiderate parking.	See site plan 13
14	<u>Charlton Close</u> , Ramsgate.	Residents, Members, TDC and KCC – are concerned about inconsiderate parking.	15/11/16 RCS & LD	Agree. To install extend the existing double yellow lines both sides of the road to deal with sight lines, reduce potential vehicular conflict and to deal with inconsiderate parking.	See site plan 14
15	<u>Hardres Street</u> , Ramsgate.	Residents, TDC and KCC – are concerned about inconsiderate parking.	15/11/16 RCS & LD	Agree. To change single yellow lines to double yellow lines to deal with sight lines, reduce potential vehicular conflict and to deal with inconsiderate parking when lines can be used.	See site plan 15
16	<u>King Street</u> , Ramsgate.	Residents, TDC and KCC – are concerned about inconsiderate parking.	15/11/16 RCS & LD	Agree. To change single yellow lines to double yellow lines to deal with sight lines, reduce potential vehicular conflict and to deal with inconsiderate parking when lines can be used.	See site plan 16
17	<u>Meeting Street</u> , Ramsgate.	Residents, TDC and KCC – are concerned about inconsiderate parking.	15/11/16 RCS & LD	Agree. To change single yellow lines to double yellow lines to deal with sight lines, reduce potential vehicular conflict and to deal with	See site plan 17

				inconsiderate parking when lines can be used.	
18	<u>St Marys Road</u> , Minster, Ramsgate.	Residents, TDC and KCC – are concerned about inconsiderate parking.	15/11/16 RCS & LD	Agree. To install double yellow lines at the bend in the road to deal with sight lines, reduce potential vehicular conflict and to deal with inconsiderate parking.	See site plan 18
19	<u>Taylor Road</u> , j/w Monkton Road and Egbert Road, Minster, Ramsgate.	Residents, TDC and KCC – are concerned about inconsiderate parking.	15/11/16 RCS & LD	Agree. To install double yellow lines all sides of the junction to deal with sight lines, reduce potential vehicular conflict and to deal with inconsiderate parking.	See site plan 19

Albion Road, Broadstairs (Site plan 2)



Proposed removal of double yellow lines



SLI 100018261

Bradstow Way/Carlton Avenue/Masons Rise, Broadstairs (Site plan 3)

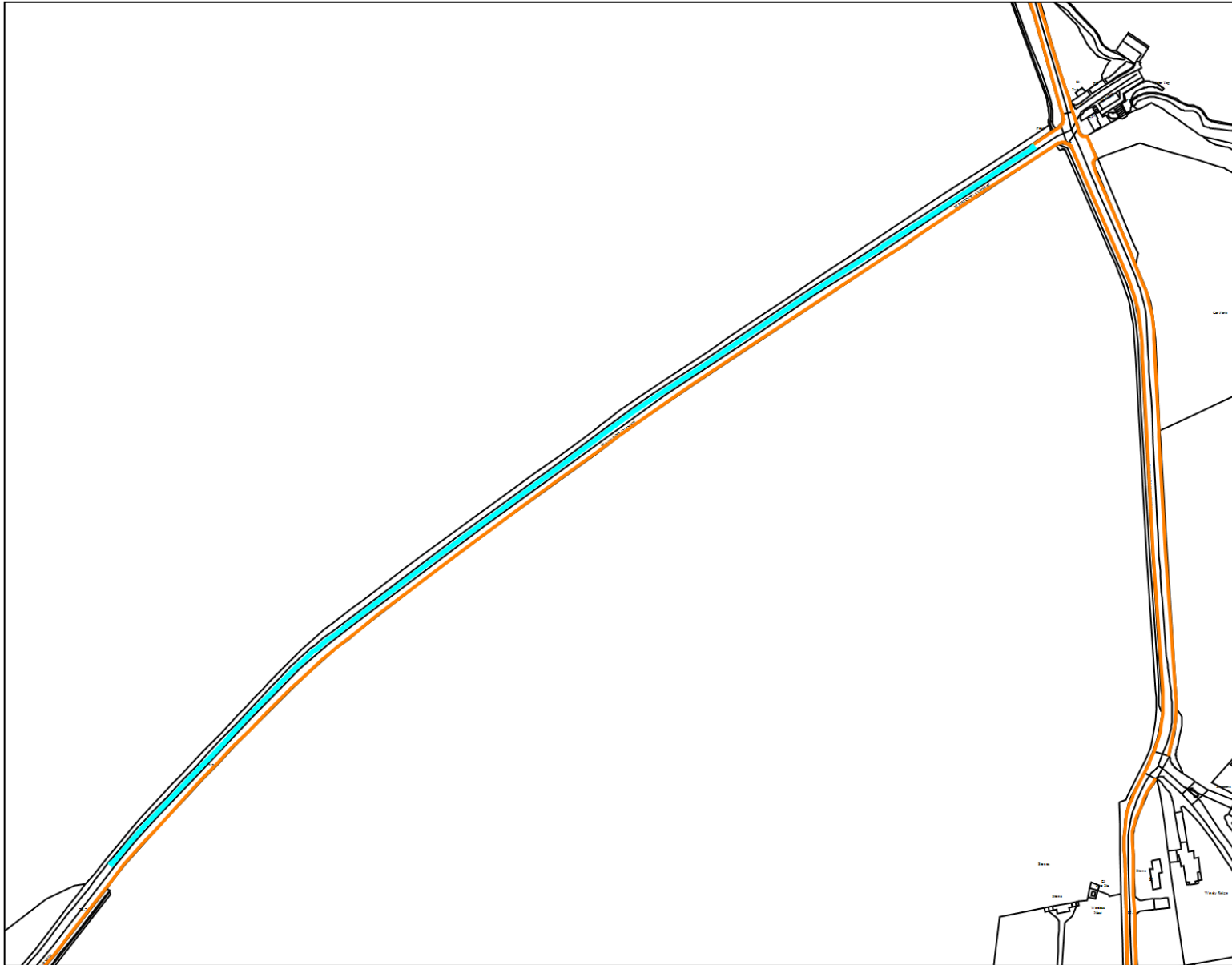


Proposed corner protection
double yellow lines



SLI 10018261

Elmwood Avenue, Broadstairs (Site plan 4)

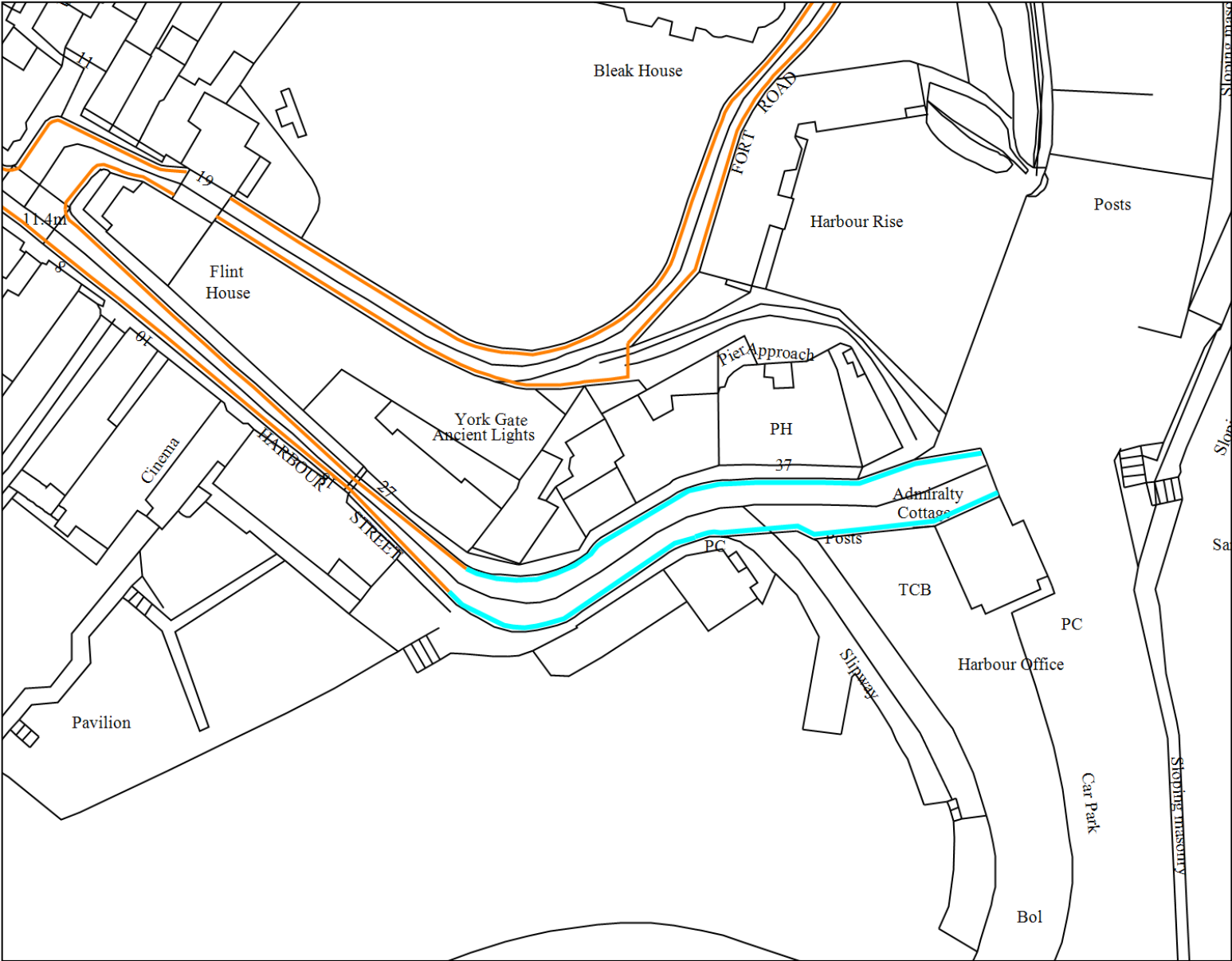


Proposed pay and display parking bays.



SLI 100018261

Harbour Street, Broadstairs (Site plan 5)

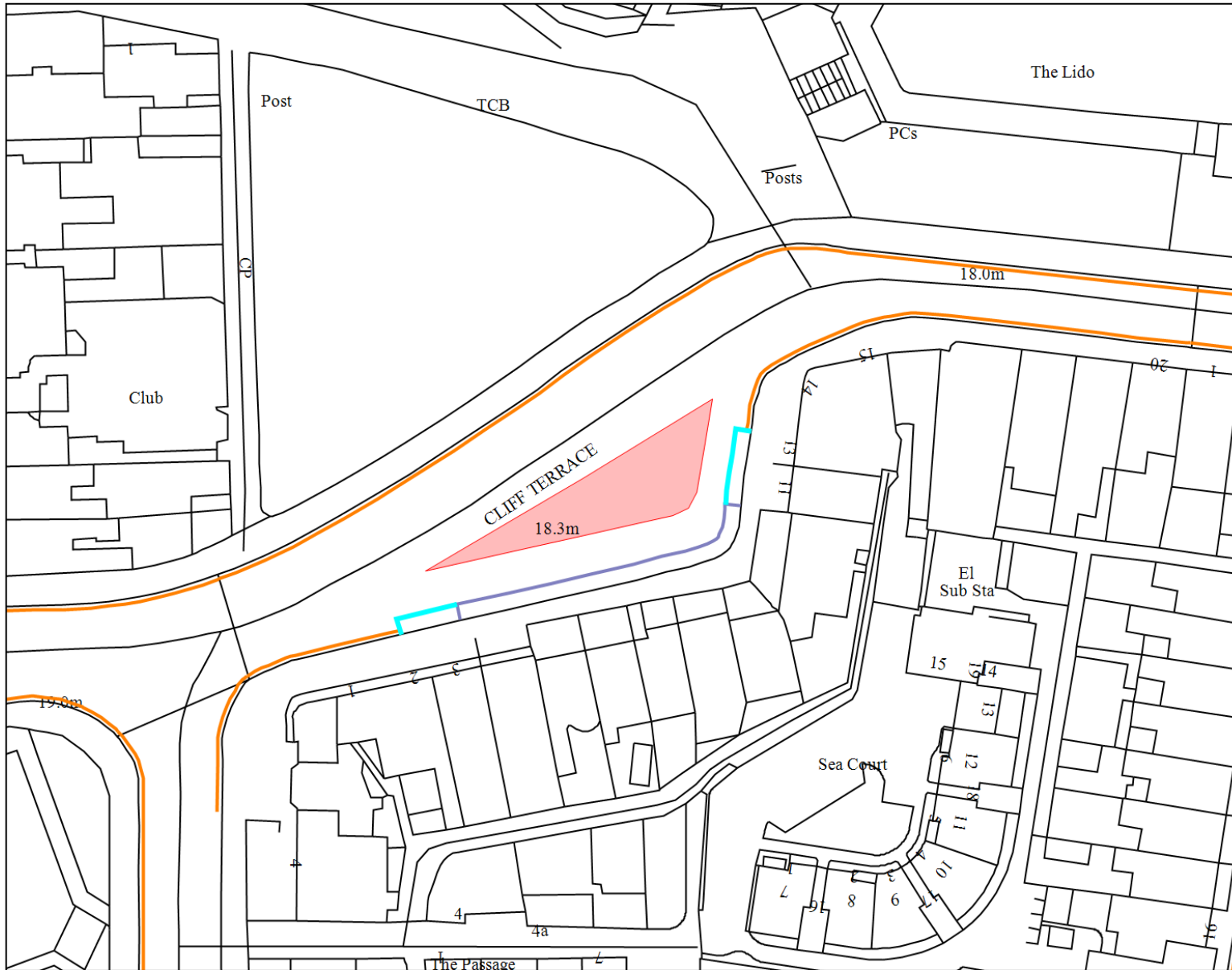


Proposed kerb marks
(loading restrictions)
between 10am to 4pm



SLI 100018261

Cliff Terrace, Margate (Site plan 7)



Proposed additional 1 hour
time limited bays

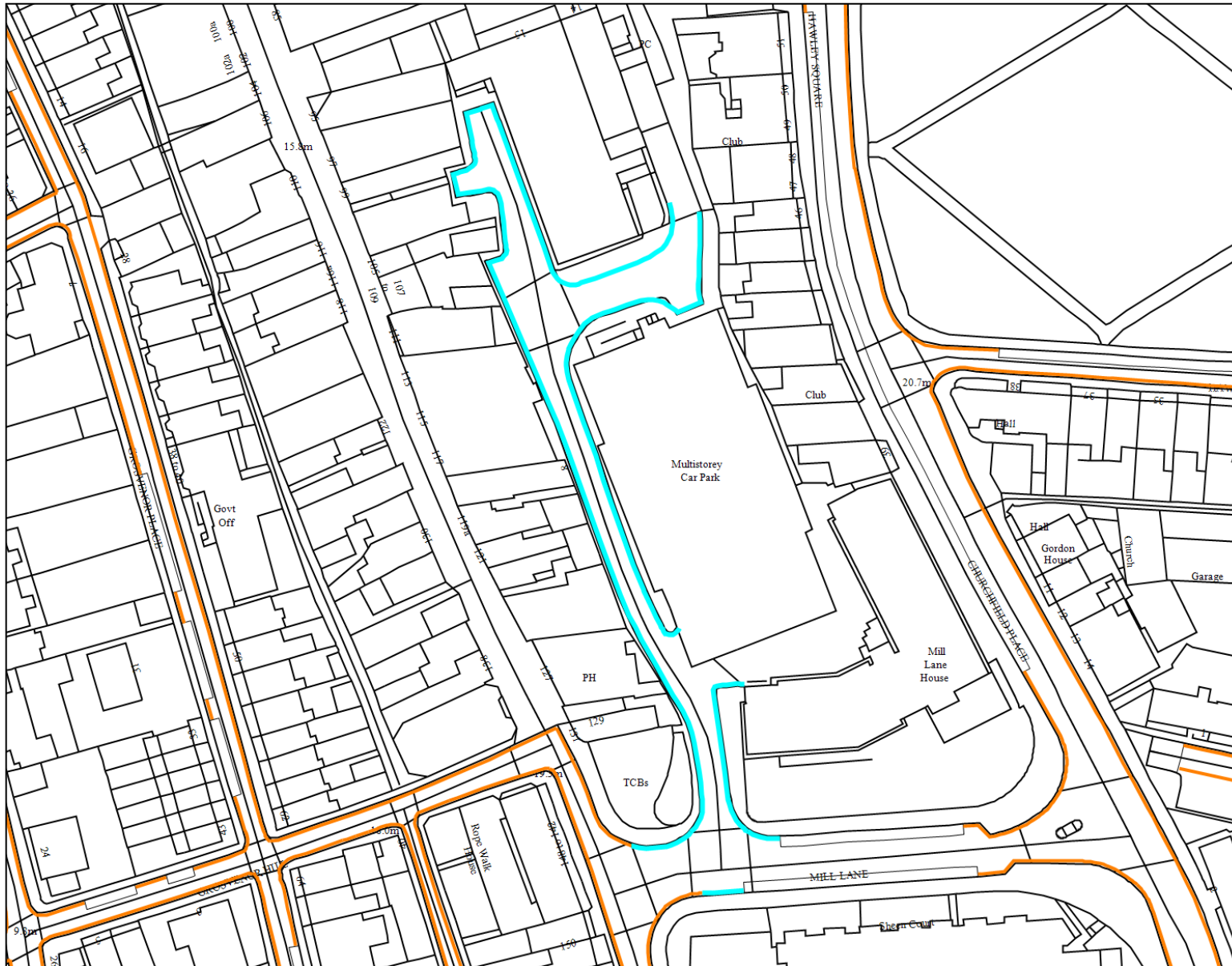


Hatched area to stop
parking



SLI 100018261

Herbert Place/Mill Lane, Margate (Site plan 8)



Proposed changing of single yellow line to double yellow lines



SLI 100018261

Holly Lane, Margate (Site plan 9)

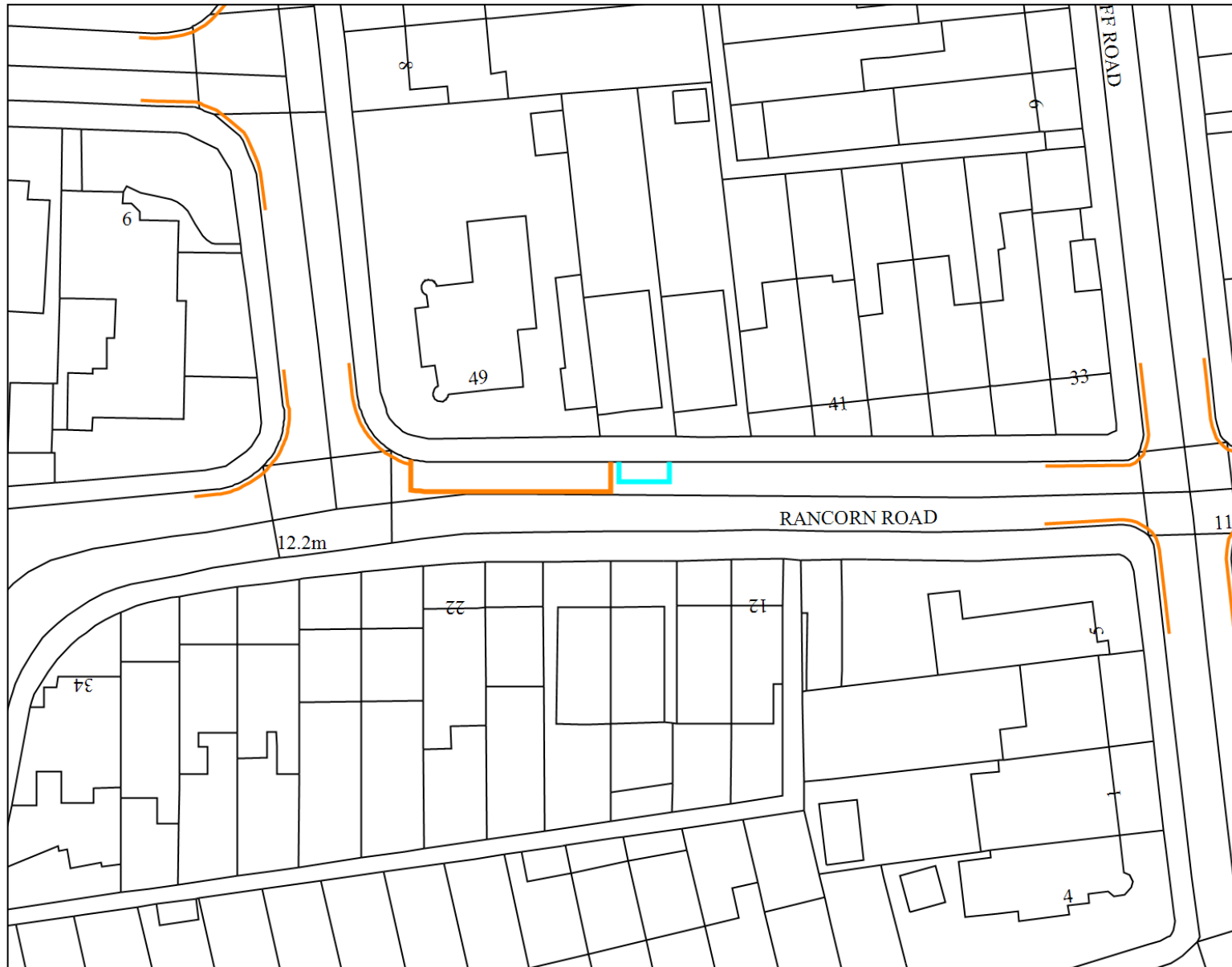


Proposed double yellow lines



SLI 100018261

Rancorn Road, Margate (Site plan 10)

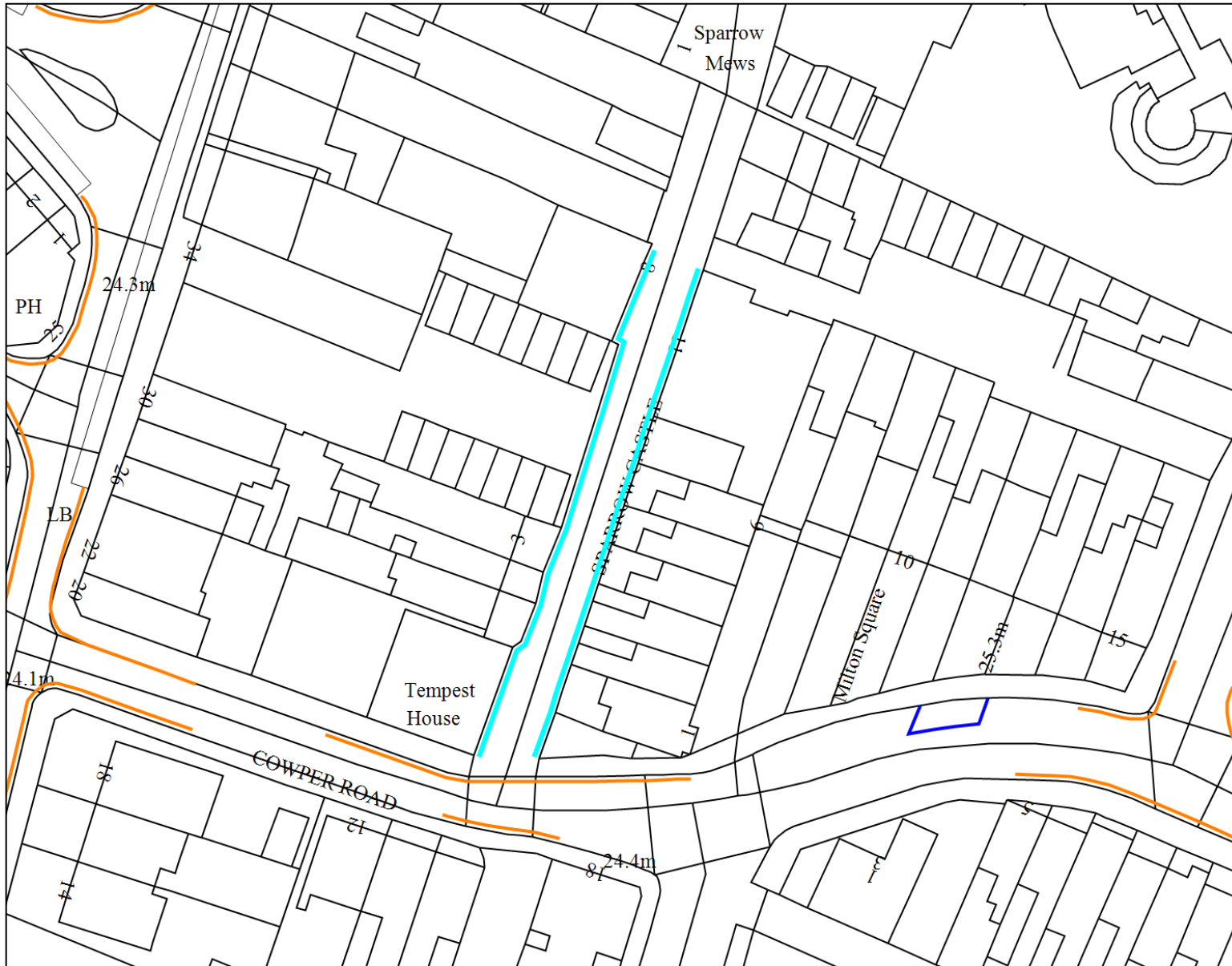


Proposed electric charging bay outside number 47



SLI 100018261

Sparrow Castle, Margate (Site plan 11)



Proposed changing of single yellow line to double yellow lines



SLI 100018261

St Pauls Road/Sweyn Road, Margate (Site plan 12)



Proposed double yellow lines



SLI 100018261

Westbrook Avenue/Rancorn Road, Margate (Site plan 13)



Proposed double yellow lines



SLI 100018261

Charlton Close, Ramsgate (Site plan 14)



Proposed extension of double yellow lines



SLI 100018261

Hardres Street, Ramsgate (Site plan 15)

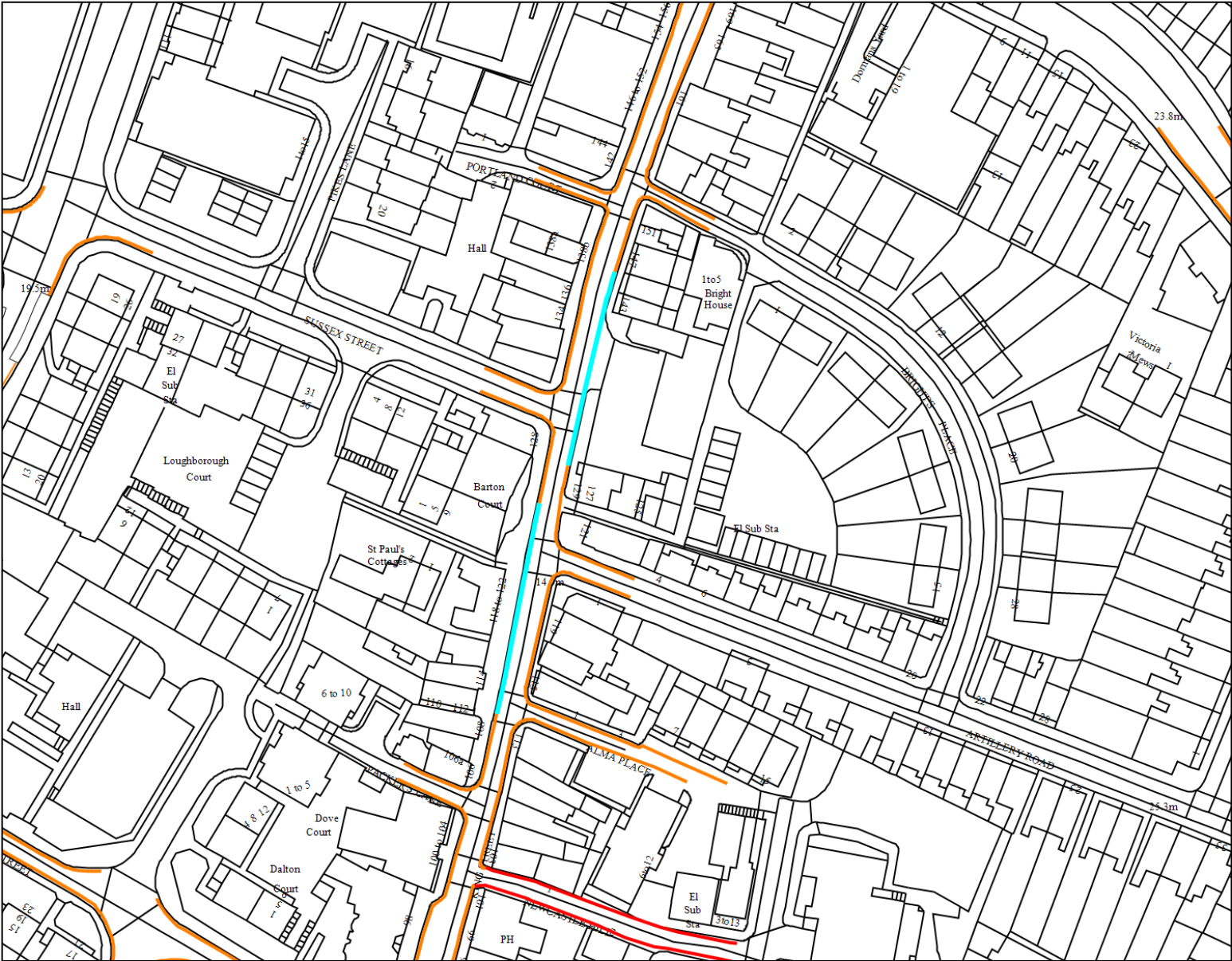


Proposed changing of single yellow line to double yellow lines



SLI 100018261

King Street, Ramsgate (Site plan 16)

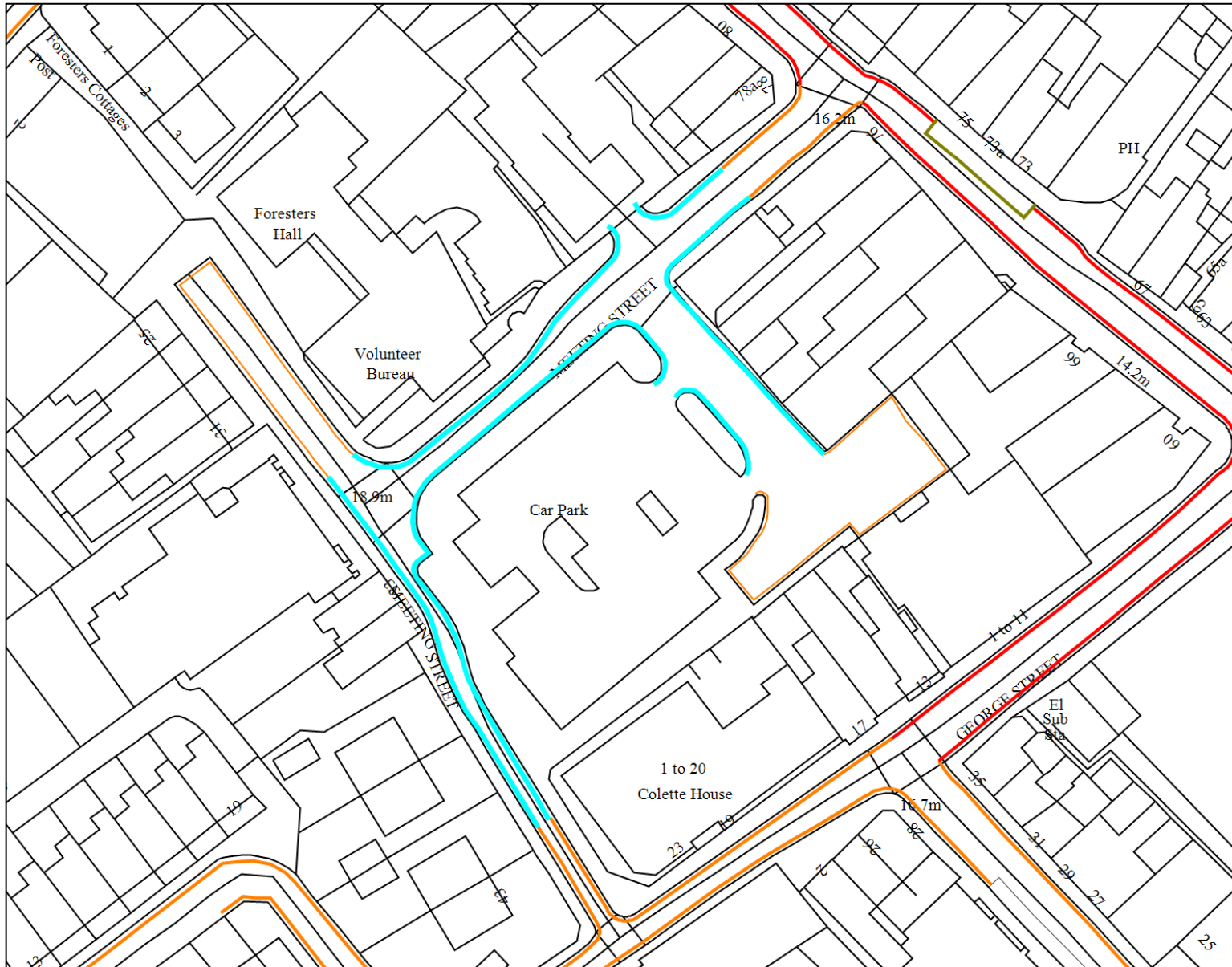


Proposed changing of single yellow line to double yellow lines



SLI 100018261

Meeting Street, Ramsgate (Site plan 17)



Proposed changing of single yellow line to double yellow lines



SLI 100018261

St Marys Road, Ramsgate (Site plan 18)

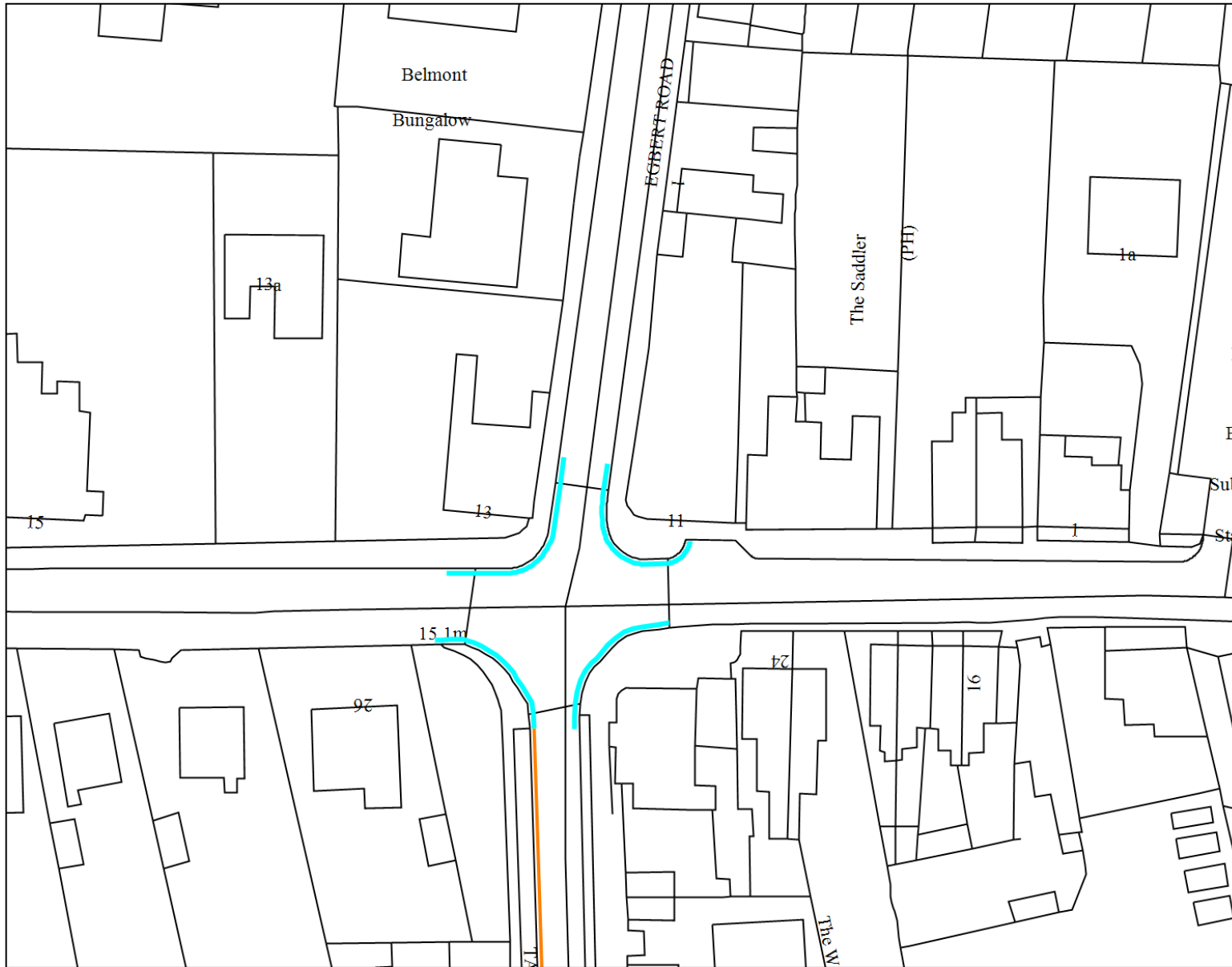


Proposed double yellow lines



SLI 100018261

Taylor Road/Egbert Road/Monkton Road, Ramsgate (Site plan 19)



Proposed double yellow lines



SLI 100018261